

MyMichigan LEUKS RPMI

COLLECTION/SUBMISSION INSTRUCTIONS

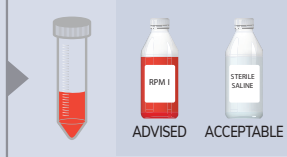


Send specimen(s) same day as collection to arrive Monday - Friday by 6pm or Saturday by 12 noon. Specimen(s) should arrive at MLabs within 12 hours (optimal results) and NOT EXCEEDING 24 HOURS from collection.

STEP 1 | COLLECT AND PREPARE SPECIMEN(S)

MINIMUM TISSUE REQUIREMENTS

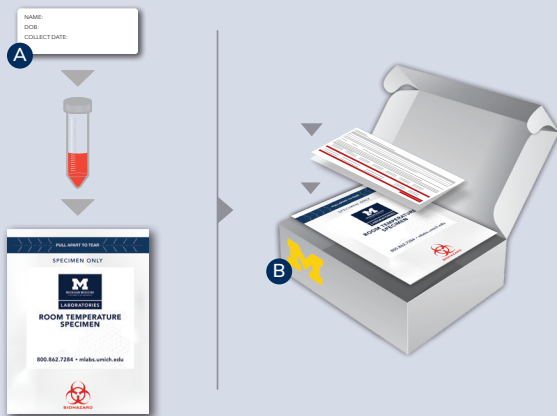
- 1.0 cm x 1-2 mm core biopsy (non-minced)
- OR
- 0.5 cm x 0.5 cm cube (non-minced)



Submerge specimen into centrifuge tube with RPMI (advised) tissue culture medium.

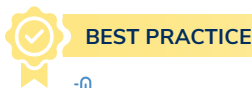
If RPMI is not available, sterile saline can be used for optimal cell viability.

STEP 2 | PACKAGE SPECIMEN(S) AND DOCUMENTS



A. Batch and label each specimen(s).

B. Add the specimen(s) into a room temperature specimen bag. Place the batch sheet and requisition paperwork in the provided shipping box. Use second shipping box, if necessary.



BEST PRACTICE



If temperatures are +80F, use a refrigerated cold pack. Avoid placing frozen cold packs next to specimens to prevent freezing.

STEP 3 | SHIP SPECIMEN(S)



A. Secure the provided FedEx label on the front of the shipping bag where indicated.

B. Apply the Blood/Bone Marrow label to the bag, folding it over the edge so that it is visible from both sides.

C. Place the box in the FedEx shipping bag and seal.



Order Supplies:

- MLabs Generic Shipping Kit
- RPMI
- Asset foldover label

SHIPMENTS RECEIVED:

MONDAY – FRIDAY
6:30AM - 6:00PM
SATURDAY
6:30AM - 12:00PM



HOLIDAY HOURS

mlabs.umich.edu
800.862.7284